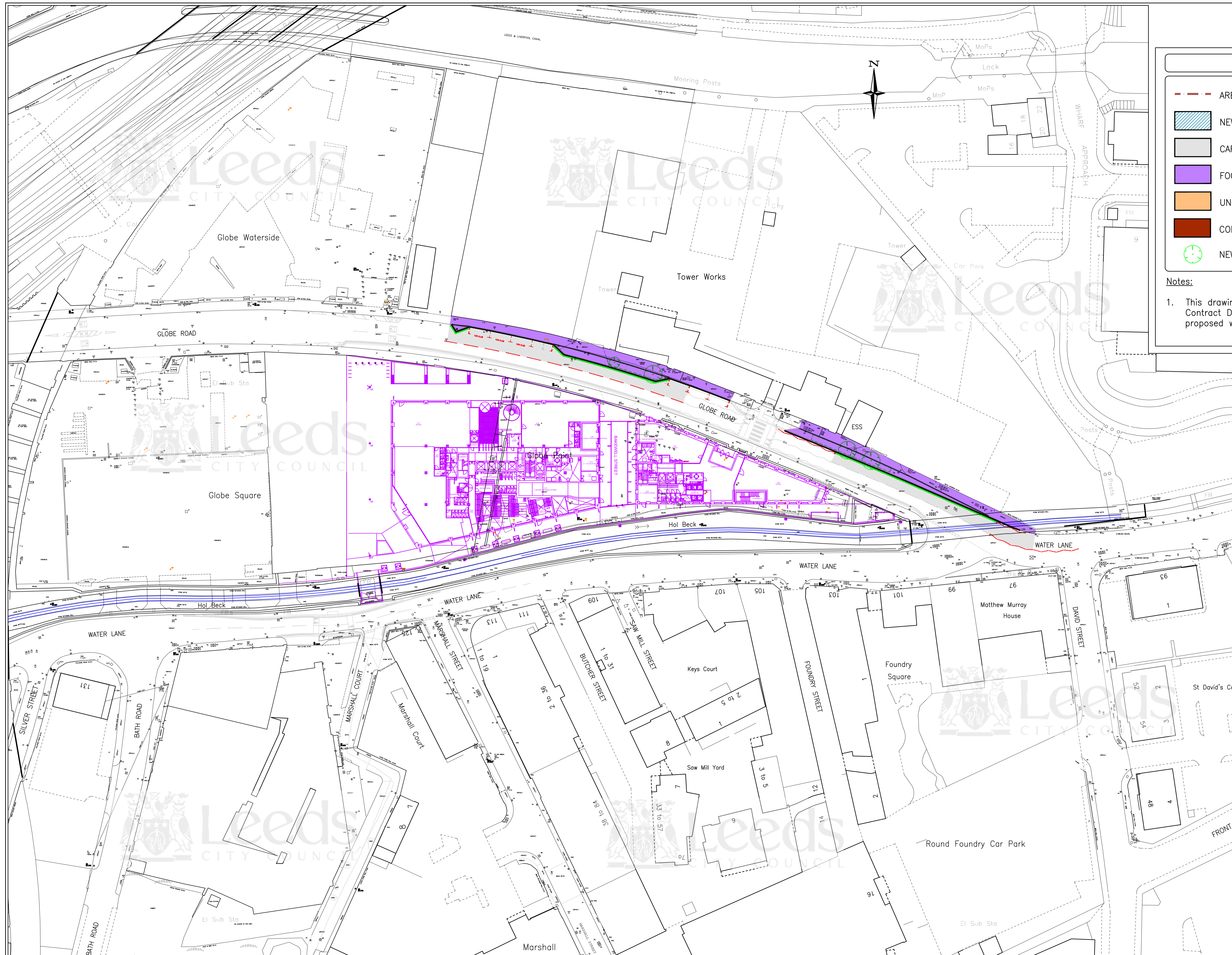


© Crown copyright and database rights 2020 OS LA100019567. You are granted a non-exclusive, royalty free, revocable licence solely to view the Licensed Data for non-commercial purposes for the period during which Leeds City Council makes it available. You are not permitted to copy, sub-licence, distribute, sell or otherwise make available the Licensed Data to third parties in any form. Third party rights to enforce the terms of this licence shall be reserved to OS.



KEY	
	AREA TO BE DEVELOPED
	NEW CARRIAGEWAY
	CARRIAGEWAY RESURFACING
	FOOTWAY WORKS
	UNCONTROLLED CROSSING (BUFF TACTILES)
	CONTROLLED CROSSING (RED TACTILES)
	NEW TREE
	NWAAT

**Notes:**  
 1. This drawing is for information only. See relevant Contract Drawings for actual construction details and proposed works.



REV	DESCRIPTION	DRAWN	CHECK	DATE	CDE
CREATED BY:	RGS	01/22	CURRENT ISSUE:	CHECKED	CDE APPROVAL
PURPOSE OF ISSUE:	WORK IN PROGRESS				
APPROVAL STATUS:	<b>DRAFT</b>				CDE STATUS:
733469 TOWER WORKS S278 HIGHWAY WORKS					
GENERAL ARRANGEMENT					
1:500					ORIGINAL SHEET SIZE
733469/LCC/HWT/XX/DR/CH/01_01_					<b>A1</b>
January 2022					ID: